

A young boy with brown hair, wearing a blue jacket and a backpack, is smiling broadly from the driver's seat of a vehicle. He has large goggles hanging from his neck. The background shows a bright, sunny day with green hills and trees visible through the window. The text is overlaid on the left side of the image.

# Noah's Big Adventure

A Feature Film by Britt Sady

Noah's Big Adventure Productions

---

[noahsbigadventure.com](http://noahsbigadventure.com)

# Logline

---

“When a teen with Down syndrome escapes the limits of his overprotective world, he embarks on a comic and heartfelt adventure that proves his independence to himself — and everyone else.”

# Synopsis

---

- A coming-of-age road trip comedy/drama inspired by true events.
- Noah takes off on an impulsive journey, hitchhiking, making unlikely friends, and finding his voice.
- His absence forces the adults around him to confront their own limitations.
- A heartfelt, funny, and daring ride toward independence.





## Tone & Style

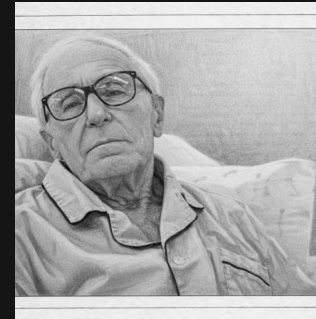
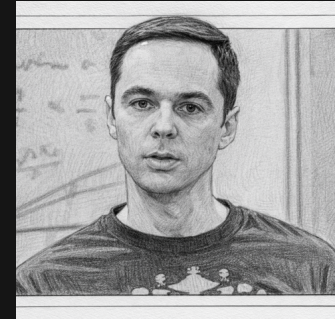
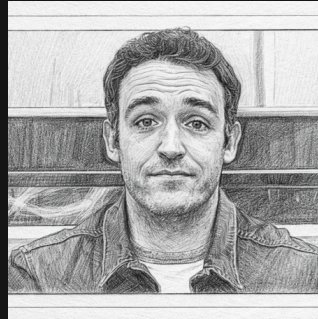
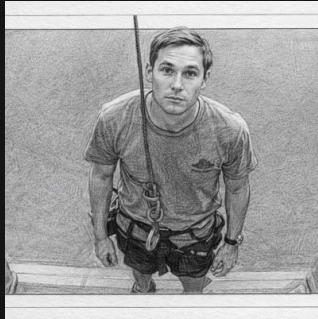
**Tone:** Quirky comedy meets heartfelt drama.

**Visual Style:** Warm, natural light, handheld intimacy, vibrant community settings.

**Comparable Films:** Little Miss Sunshine, The Peanut Butter Falcon, CODA.

# Characters

---



---

**Noah** — Teen with Down syndrome — funny, bold, underestimated.

**Family & Adults** — Protective, flawed, often clueless.

**Allies & Eccentrics** — Strangers who see Noah's potential.

# Why Now

---

- 20M+ Americans with intellectual disabilities — few see themselves on screen.
- Audiences embrace inclusive, authentic stories (CODA, Peanut Butter Falcon).
- This film will entertain while shifting perceptions.



# Comparable Films

---

## **The Peanut Butter Falcon (2019)**

Indie hit, inclusive casting.

## **Little Miss Sunshine (2006)**

Quirky road trip family comedy.

## **CODA (2021)**

Oscar-winning inclusive family drama.



# Director's Vision

---



## Diane Wagner

Writer / Director / Producer

- Cinema that balances comedy with truth.
- Honest, funny, warm storytelling rooted in character.
- A visual language of warmth, natural light, and community.

# Producer's Statement

---

## **Britt Sady**

Producer, Nonprofit Leader, Advocate, Parent

- Committed to building an inclusive film that changes perceptions.
- Guiding the film with courage, integrity, and care.
- A story that champions independence and challenges expectations.



# Production Plan

---

## Development

Script finalized, fundraising in motion.

## Pre-Production

Casting, location scouting, design.

## Production

Summer shoot in accessible locations.

## Post-Production

Editing, score, festival submissions.

# Audience & Impact

---

**Audience:** Families, disability advocates, indie lovers.

**Impact:** Inclusion, representation, visibility for neurodiverse communities.

**Outreach:** Partnerships with nonprofits, community screenings.



# Distribution Strategy

---

**Sundance**

**SXSW**

**Tribeca**

- Streamers: Netflix, Hulu, Amazon, Apple TV+.
- Community screenings with nonprofit partners.

# Budget & Financing

---

**\$X**

Production

**\$X**

Post-Production

**\$X**

Marketing

## Financing Sources:

Investors • Grants • Nonprofit Partnerships

# Noah's Big Adventure

“Join us on Noah's Big Adventure — a film that redefines independence, humor, and heart.”

Seeking partners, investors, and advocates to join the journey.

---

[noahsbigadventure.com](http://noahsbigadventure.com)